



"WORLDWIDE STAINLESS STEEL"

 **SARITAS**



in pursuit of perfection

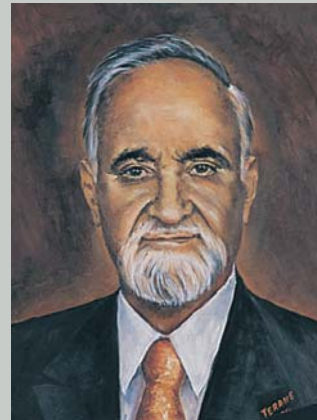


I believe what brought Saritaş to the place it is today, is our hard work in pursuing perfection. Through the start of the company in “Perşembe Pazarı” to our latest facility in Gebze, our product, technology and team have ameliorated tremendously. Our overarching principle of providing the very best service played a crucial role during the path of making our brand a distinguished one in the stainless steel industry. It is such a pride for me to say that our Gebze Facility, with its broad product portfolio and high-end technology, is not just the largest stainless steel service center in Europe, but also in terms of investment and processing capacity, it is one of the largest in the world.

Today, under our ever-rising yellow roof, we work with all our energy and passion to continue being a globally recognized brand.

Ercüment Saritaş
Chairman

from past...



In 1957, our founder, Hüseyin Sarıtaş started off his business in the trade of scrap metal in “Perşembe Pazarı”, İstanbul which was considered by that time to be the heart of the country’s economy in iron and steel trade. As stainless steel started to be widely used, he realized that acquiring a stainless steel facility was an inevitable move in order to stand strong in the steel market.



to present

In 1998, the company’s stainless steel service center occupying 20.000-square-meter area in Dudullu, İstanbul, was put into operation. Within a short time, Sarıtaş rose to the level of market leadership in flat stainless steel products. Sarıtaş now supplies to a significant degree the needs of many industries which include but not limited to chemicals, food, automotive and household appliances.



a yellow roof rising in Gebze

SARITAŞ Yellow Roof is a global link between mills and end users. It combines supply continuation at reliable high quality standard.

SARITAŞ

Saritaş Gebze in action

Continually elevating its status as a world-class processing hub for stainless steel, Saritaş grew out of its Dudullu facility and moved to the factory built in Gebze, on an 113.000 square-meter plot with 80.000 square-meters of indoor space in 2012.

At the Gebze facility, under one roof Saritaş has the capability to process every kind of stainless steel from coil to sheet with its cutting-edge technology. With its 28 production lines and ample stocking capacity, Saritaş is ready to satisfy a diverse range of industries' needs.



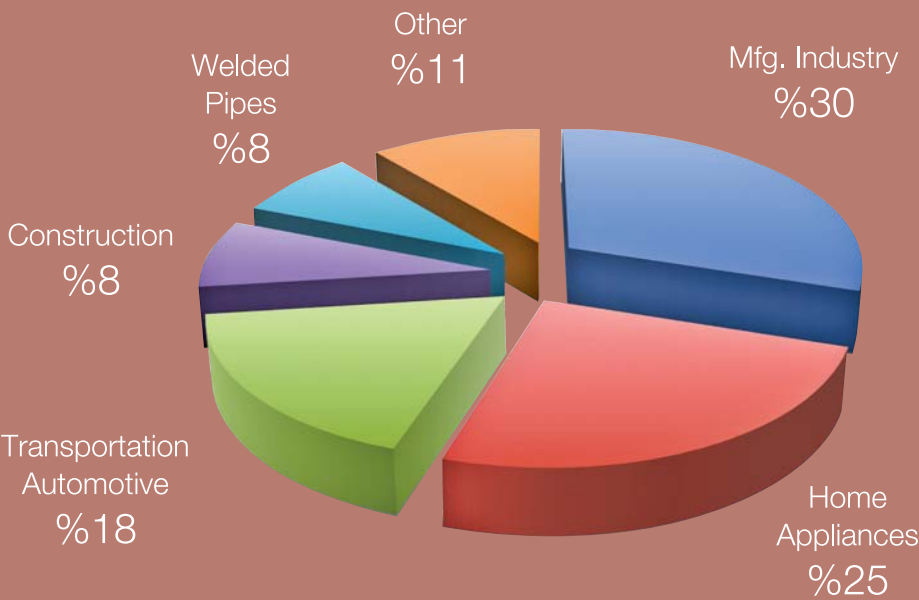


80.000 square meters devoted to
stainless steel

stainless steel-it's everywhere

The most notable characteristics of stainless steel are as follows:

- Environmental friendliness, recyclability, hygiene, and a practically infinite lifespan
- Sleek appearance and ease of cleaning
- Suitability for use at low and high temperatures alike
- The range of mechanical properties offered by its many varieties



Global Stainless Steel Consumption





technology harnessed



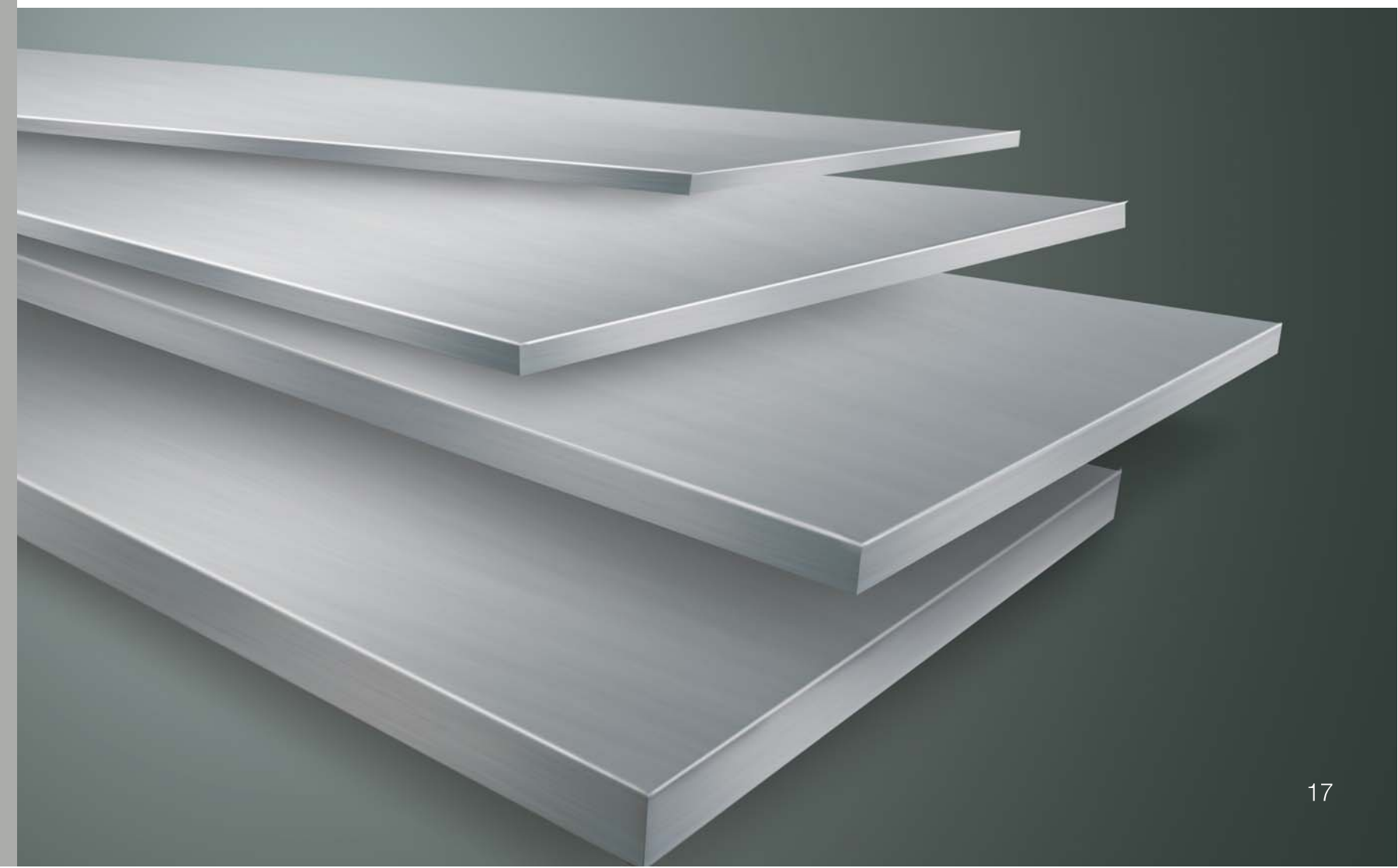
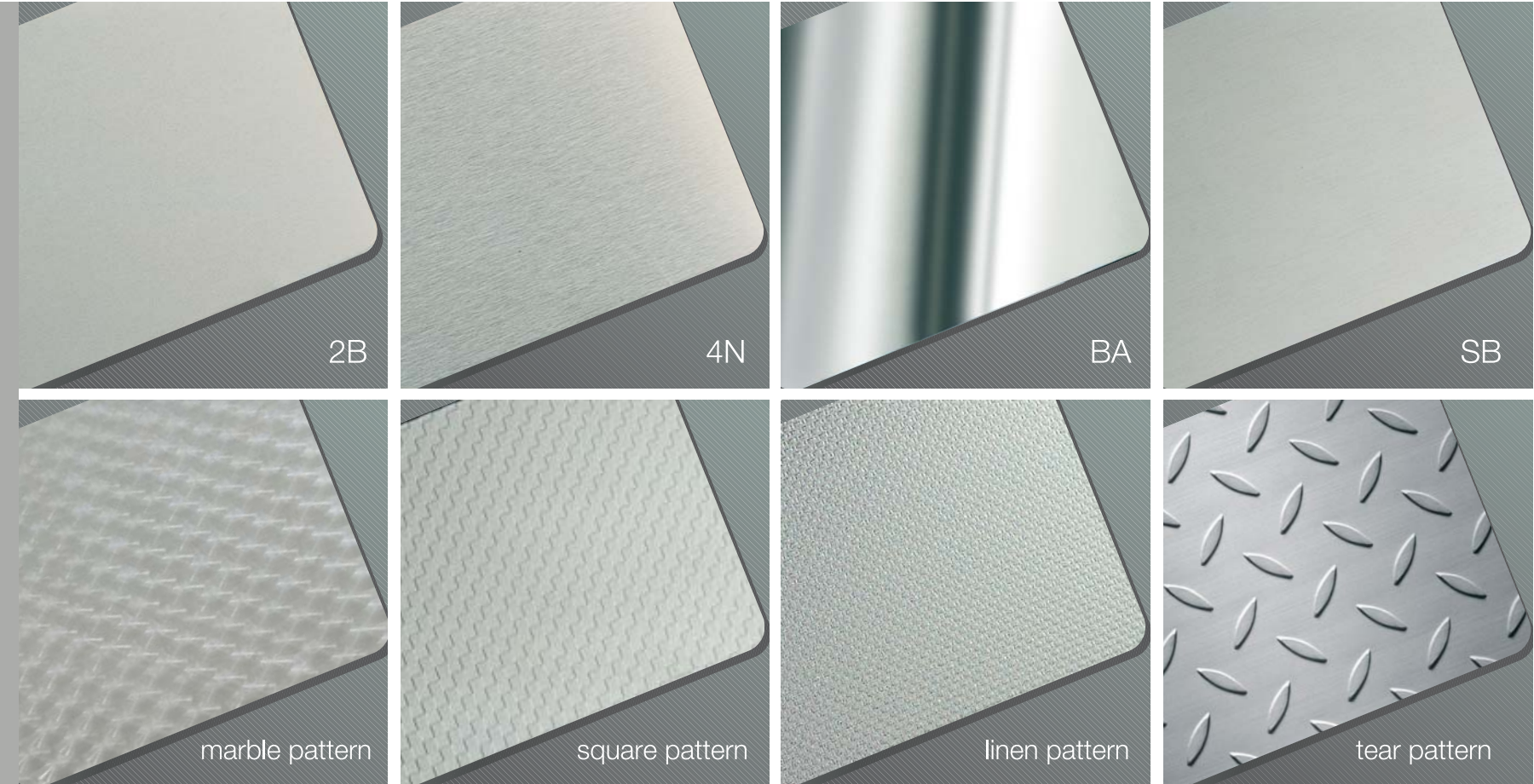
All processes are backed-up by high technology enabling SARITAŞ to provide Stainless Steel services at highest international standards.

technology backed by people



Our team is young, creative, engaged and encouraged. And our team is best skilled and fully committed to our domestic and international customers.

rainbow of eye-catching surface finishes



Stainless steel is a piece of art with various surface finishes and textures. Such delicate nature of material is treated by SARITAŞ with significant attention during all processing and storing.

let us indulge you in
stainless steel



our processes



- SLITTING LINES
- CUT-TO LENGTH LINES
- GRINDING / BRUSHING LINES



- LASER CUTTING
- PLASMA CUTTING
- GUILLOTINE SHEARING
- VERTICAL SAW CUTTING



- FLAT BARS PRODUCTION
- SQUARE BARS PRODUCTION
- VERTICAL SAW CUTTING
- HORIZONTAL SAW CUTTING
- TUBE POLISHING / GRINDING
- FLAT BARS, SQUARE, RECTANGULAR TUBES GRINDING / BRUSHING



COIL SERVICE CENTER

7 Cut-to-Length Lines

Thickness Range (min.- max.)	Width Range (min.- max.)	Length Range (min.- max.)
0.40 - 2.0 mm	100 - 1250 mm	200 - 4.000 mm
0.40 - 3.0 mm	300 - 1500 mm	300 - 8.000 mm
1.50 - 10.0 mm	500 - 2000 mm	500 - 17.000 mm
0.80 - 15.0 mm	500 - 2000 mm	500 - 15.000 mm

1 Flat Bar Cut-to-Length Line

Thickness Range (min.- max.)	Width Range (min.- max.)	Length Range (min.- max.)
0.70 - 12.7 mm	15 - 250 mm	250 - 8.000 mm



cut-to
length
lines

8 Units



COIL SERVICE CENTER

5 Slitting Lines

Thickness Range	Min. Strip Width	Max. Coil Width
0.30 - 1.00 mm	10 mm	750 mm
1.00 - 2.00 mm	17 mm	750 mm
2.00 - 5.00 mm	15 mm	2100 mm
6.00 - 8.00 mm	20 mm	2100 mm
10.00 - 12.00 mm	30 mm	2100 mm
12.00 - 15.00 mm	40 mm	2100 mm



slitting
lines

5 Units



COIL SERVICE CENTER

3 Coil to Coil Grinding / Brushing Lines

Thickness Range (min.- max.)	Min. Coil Width	Max. Coil Width
0.40 - 4.00 mm	400 mm	1.600 mm

Sheet to Sheet Grinding / Brushing Line

Thickness Range (min.- max.)	Min. Sheet Width	Max. Sheet Width	Min. Sheet Length	Max. Sheet Length
0.40 - 6.00 mm	150 mm	1.550 mm	800 mm	6.000 mm

Marble / Circle Finishing Line

Thickness Range (min.- max.)	Min. Sheet Width	Max. Sheet Width	Min. Sheet Length	Max. Sheet Length
0.60 - 10.0 mm	500 mm	2.000 mm	850 mm	6.000 mm

No.8 Super Mirror Finishing Line

Thickness Range (min.- max.)	Min. Sheet Width	Min. Sheet Length	Max. Sheet Length
0.60 - 10.0 mm	1.600 mm	1.000 mm	6.000 mm



grinding/
brushing
lines

6 Units



Santaş tailors stainless steel with the highest degree of precision into any form requested by its customers.

tailors of steel



PLATE SERVICE CENTER

Laser Cutting

Thickness Range (min.- max.)	Maximum Width	Maximum Length
0.40 - 25.0 mm	2.000 mm	4.000 mm

Plasma Cutting

Thickness Range (min.- max.)	Maximum Width	Maximum Length
10.0 - 100.0 mm	4.000 mm	12.000 mm



laser
cutting
plasma
cutting

3 Units

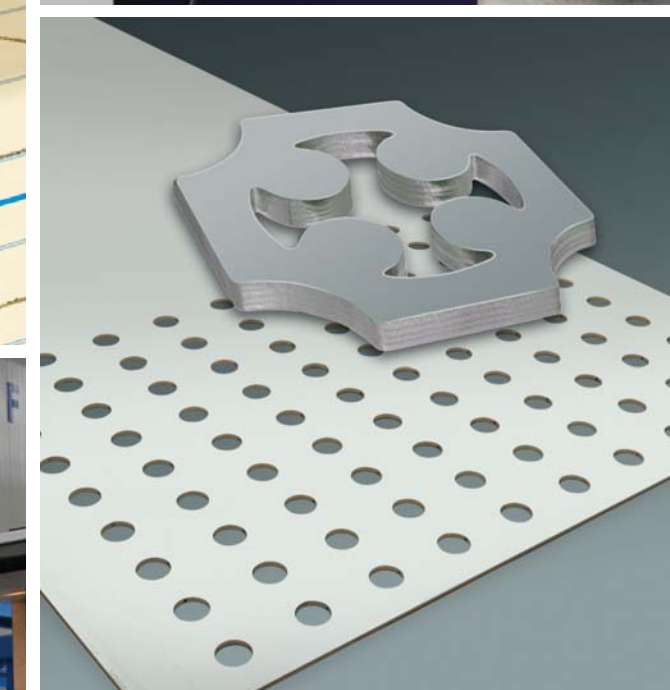




PLATE SERVICE CENTER

Guillotine Shearing

Thickness Range (min.- max.)	Maximum Width	Maximum Length
3.0 - 34.0 mm	6.000 mm	6.400 mm



guillotine
shearing



LONG PRODUCTS SERVICE CENTER

Flat Bars Production

Thickness Range (min.- max.)	Minimum Width	Maximum Width	Maximum Length
0.70 - 250 mm	15 mm	250 mm	8.000 mm





LONG PRODUCTS SERVICE CENTER

Square Bars Production

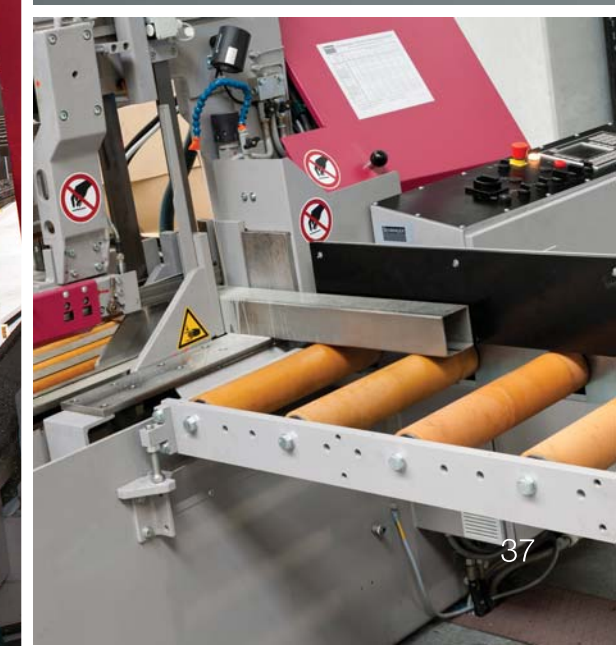
Thickness Range (min.- max.)	Minimum Width	Maximum Width	Maximum Length
0.70 - 250 mm	10 mm	250 mm	6.000 mm

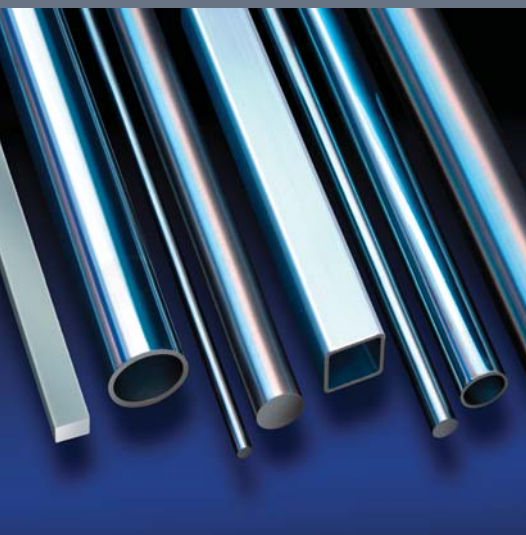
Vertical Saw Cutting

Thickness Range (min.- max.)	Minimum Width	Maximum Width	Maximum Length
10 - 250 mm	10 mm	2500 mm	6.000 mm

Horizontal Saw Cutting

Thickness Range (min.- max.)	Minimum Width	Maximum Length
0.70 - 250 mm	950 mm	8,550 mm
10x8 mm-500x400 mm		





LONG PRODUCTS SERVICE CENTER



tube polishing/
grinding

flat bars, square,
rectangular
tubes grinding/
brushing



Tube Polishing / Grinding and Packaging

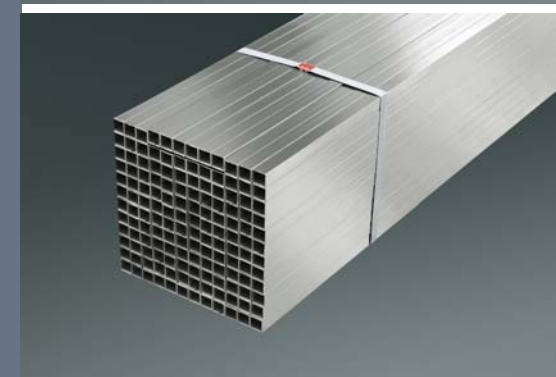
Thickness Range (min.- max.)	Minimum Length	Maximum Length
12,0 - 120 mm	200 mm	8,000 mm

Flat Bars, Square Rectangular Tubes Grinding / Brushing

Thickness Range (min.- max.)	Width Range	Min. Length	Max. Length
2,0 - 10 mm	10 - 150 mm	200 mm	8,000 mm



polishing and grinding



grinding and brushing

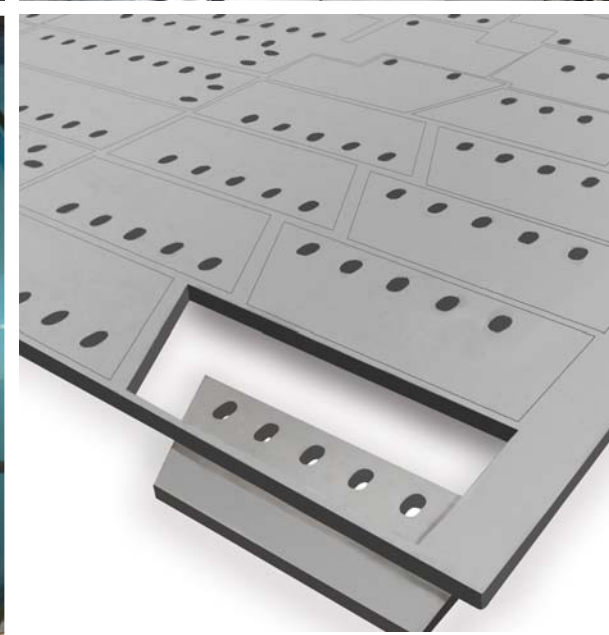
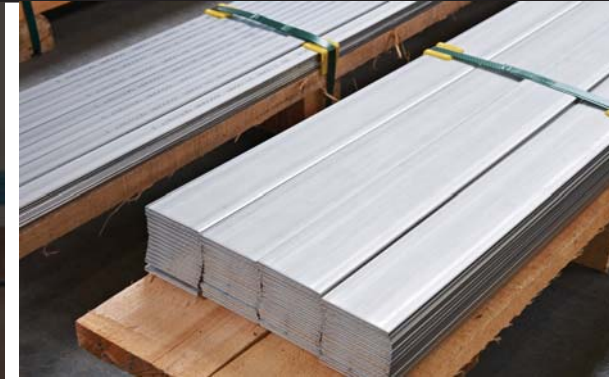




27t
PFEIFER
SEIL- UND HEBETECHNIK

OPR.1

the capacity to satisfy
every request



all things stainless steel



Our goal is to be the one-stop shopping place for all things stainless steel.



beyond national borders

Sartaş has transcended the nation's borders thanks to its constant investment in growth, which has allowed the brand to be recognized globally in the stainless steel world.

With the achievement of its fresh outlook, contemporary management approach, job creation and world-class technology, Sartaş is ready to serve its customers around the globe by aiming to deliver coils, plates and long products promptly and in first-class quality.



STAINLESS
STEEL
TECHNIC
SPECIFI-
CATIONS

Stainless Steel Applications		
ASTM CODE	SPECIFICATIONS	APPLICATIONS
304	Base kind of stainless steel. For mechanical strength and oxidation up 400°C’	Household goods, hollow-ware, catering equipment, food and process industry equipment, dairy equipment, nitrogen and hydrogen tanks, metal furniture, car parts and other vehicles, etc.
304L	Same as 304 with low carbon (better formability).	Thick-walled welded structures, strongly oxidizing envoirements as nitric acid, lining for coal hoppers, liquid fertilizer spray tanks, tomato paste storage tanks, etc.
321	Useful in higher temperatures and with the content of titan higher corrosion resistance.	Thick-walled welded structures, high temperature applications, aircraft collector rings and exhaust stacks, cabin heaters, carburetor air intensifier tubes, exhaust manifolds, jet engine parts, etc
316	For mechanical strength and oxidation up tp 600 °C. Excellent ductility, formabilityand toughness. Due to the content of Mo resistant to high oxidation and acid.	Textile-brewery-paper-medical and fatty acid industry, acetic acid compounds, etc.
316L	Same as 316 with low carbon but resistant up to 400°C.	Thick-walled welded structures in the same scope of application as 316
316 Ti	The version of 316, Ti alloyed, resistant to higher temperatures and oxidations.	Thick-walled welded structures in corroding envoirements, high temperature applications, developed for highly corrosive envoirements in the chemical and process industries and for sea water applications.
309S	At 1050 °C higher oxidation resistance.	High temperature applications.
310	At 1100 °C higher oxidation resistance.	High temperature applications, blast furnace parts, chemical and petro-chemical industries.
310S	Same as 310 slightly higher resistance.	Same as 310
430	Better surface, without Ni, magnetic.	Bright surface applications on decorative equipments.

Stainless Steel Surface Finishes			
CODE			SURFACE
EN	ASTM	Sarita	
1D	1	No1	Hot-rolled, heat treated, pickled.
2E	1	2E	Semi cold-rolled, heat treated, mechanically, desclaed, followed by pickling (Cold rolled acc. to EN but not ASTM).
2D	2D	2D	Cold-rolled, heat treated, pickled.
2B	2B	2B	Cold-rolled, heat treated, pickled, skin passed.
2R	BA	BA	Cold-rolled, bright annealed, (May be skin passed).
2H	TR	TR	Work hardened.
2G	3	3N	Cold-rolled, heat treated, pickled and polished.
2J	6	SB	Cold-rolled, heat treated, pickled and brushed or dull polished.
2K	4	4N	Cold-rolled, heat treated, pickled and fine / satin polished.
2P	8	No.8	Bright polished, mirror finish.

Stainless Steel Standards and Chemical Values									
	Int.Standards		Chemical Compositions (%)						Other Names
	EN	ASTM/UNS	C	N	Cr	Ni	Mo	Others	
GENERAL PURPOSE USE	FERRITIC	1.4003	S40977	≤ 0,030	≤ 0,030	10,5 – 12,5	0,30 – 1,00	-	
		1.4000	410S	≤ 0,08	-	12,0 – 14,0	-	-	
		1.4016	430	≤ 0,080	-	16,0 – 18,0	-	-	-
		1.4509	S43932	≤ 0,030	-	17,5 – 18,5	-	-	Nb, Ti
		1.4521	444	≤ 0,025	≤ 0,030	17,0 – 20,0	-	1,80 – 2,50	Ti
	MARTENSITIC	1.4006	410	0,08 – 0,15	-	11,5 – 13,5	≤ 0,75	-	-
		1.4021	420	0,16 – 0,25	-	12,0 – 14,0	-	-	-
		1.4028	420	0,26 – 0,35	-	12,0 – 14,0	-	-	-
		1.4313	S41500	≤ 0,05	≥ 0,02	12,0 – 14,0	3,5 – 4,5	0,30 – 0,70	-
	DUPLEX	1.4418	-	≤ 0,06	≥ 0,02	15,0 – 17,0	4,0 – 6,0	0,80 – 1,50	-
		1.4162	S32101	0,03	0,22	21,5	1,5	0,30	5Mn
		1.4362	S32304	≤ 0,030	0,05 – 0,20	22,0 – 24,0	3,5 – 5,5	0,10 – 0,60	-
		1.4462	S322052	≤ 0,030	0,10 – 0,22	21,0 – 23,0	4,5 – 6,5	2,50 – 3,50	-
		1.4501	S32760	≤ 0,030	0,20 – 0,30	24,0 – 26,0	6,0 – 8,0	3,0 - 4,0	W
	AUSTENITIC	1.4410	S32750	≤ 0,030	0,20 – 0,35	24,0 - 26,0	6,0 – 8,0	3,0 - 4,5	-
		1.4310	301	0,05 – 0,15	≤ 0,11	16,0 – 19,0	6,0 – 9,5	≤ 0,80	-
		1.4318	301LN	≤ 0,030	0,10 – 0,20	16,5 – 18,5	6,0 – 8,0	-	-
		1.4372	201	≤ 0,15	0,05 – 0,25	16,0 – 18,0	3,5 – 5,5	-	7Mn
		1.4568	631	≤ 0,09	-	16,0 – 18,0	6,5 – 7,80	-	Al
		1.4301	304	≤ 0,07	≤ 0,11	17,5 – 19,5	8,0 – 10,5	-	-
		1.4307	304L	≤ 0,030	≤ 0,11	17,5 – 19,5	8,0 – 10,5	-	-
		1.4311	304LN	≤ 0,030	0,12 – 0,22	17,5 – 19,5	8,5 – 11,5	-	-
		1.4541	321	≤ 0,08	-	17,0 – 19,0	9,0 – 12,0	-	Ti
		1.4550	347	≤ 0,08	-	17,0 – 19,0	9,0 – 12,0	-	Nb
		1.4305	303	≤ 0,10	≤ 0,11	17,0 – 19,0	8,0 – 10,0	-	Cu
		1.4303	305	≤ 0,06	≤ 0,11	17,0 – 19,0	11,0 - 13,0	-	-
		1.4306	304L	≤ 0,030	≤ 0,11	18,0 – 20,0	10,0 – 12,0	-	-
		1.4401	316	≤ 0,07	≤ 0,11	16,5 – 18,5	10,0 – 13,0	2,00 – 2,50	-
		1.4404	316L	≤ 0,030	≤ 0,11	16,5 – 18,5	10,0 – 13,0	2,00 – 2,50	-
		1.4436	316	≤ 0,05	≤ 0,11	16,5 – 18,5	10,5 – 13,0	2,50 – 3,00	-
		1.4432	316L	≤ 0,030	≤ 0,11	16,5 – 18,5	10,5 – 13,0	2,50 – 3,00	-
		1.4406	316LN	≤ 0,030	0,12 – 0,22	16,5 – 18,5	10,0 – 12,5	2,00 – 2,50	-
		1.4429	S31653	≤ 0,030	0,12 – 0,22	16,5 – 18,5	11,0 – 14,0	2,50 – 3,00	-
		1.4571	316Ti	≤ 0,08	-	16,5 – 18,5	10,5 – 13,5	2,00 – 2,50	Ti
		1.4435	316L	≤ 0,030	≤ 0,11	17,0 – 19,0	12,5 – 15,0	2,50 – 3,00	-
		1.4438	317L	≤ 0,030	≤ 0,11	17,5 – 19,5	13,0 – 16,0	3,00 – 4,00	-
		1.4439	317LMN3	≤ 0,030	0,12 – 0,22	16,5 – 18,5	12,5 – 14,5	4,00 – 5,00	-
		1.4466	S31050	≤ 0,020	0,10 – 0,16	24,0 – 26,0	21,0 – 23,0	2,00 – 2,50	-
		1.4539	904L	≤ 0,020	≤ 0,15	19,0 – 21,0	24,0 – 26,0	4,00 – 5,00	1,5Cu
		1.4529	N08926	≤ 0,020	0,15 – 0,25	19,0 – 21,0	24,0 – 26,0	6,00 – 7,00	Cu
		1.4547	S31254	≤ 0,020	0,18 – 0,25	19,5 – 20,5	17,5 – 18,5	6,00 – 7,00	Cu
		1.4565	S34565	≤ 0,030	0,30 – 0,60	24,0 – 26,0	16,0 – 19,0	4,00 – 5,00	5,5Mn
HEAT RESISTANT	FERRITIC	1.4713	-	≤ 0,012	≤ 0,02	6,00 – 8,00	-	-	0,7Al
		1.4724	-	≤ 0,012	≤ 0,02	12,00 – 14,00	-	-	0,8Al
		1.4742	-	≤ 0,012	≤ 0,02	17,00 – 19,00	-	-	1Al
		1.4762	-	≤ 0,012	≤ 0,02	23,00 – 26,00	-	-	1,4Al
	AUSTENITIC	1.4948	304H	0,05	-	18,1	8,3	-	-
		1.4878	321	≤ 0,10	-	17,00 – 19,00	9,00 – 12,00	-	Ti
		1.4818	S30415	0,04 – 0,08	0,12 – 0,20	18,00 – 20,00	9,00 – 11,00	-	1,3Si, Ce
		1.4833	309S	≤ 0,15	≤ 0,11	22,00 – 24,00	12,00 – 14,00	-	-
		1.4828	-	≤ 0,20	≤ 0,11	19,00 – 21,00	11,0 - 13,00	-	2Si
		1.4835	S30815	0,05 – 0,12	0,12 – 0,20	20,00 – 22,00	10,00 – 12,00	-	1,6Si, Ce
		1.4845	310S	≤ 0,10	≤ 0,11	24,00 – 26,00	19,00 – 22,00	-	-
		1.4841	314	≤ 0,20	≤ 0,11	24,00 – 26,00	19,00 – 22,00	-	2Si

quality isn't optional at Sarıtaş, it's the standard



This label certifies the reliability of the products Sarıtaş delivers to users around the world.

In accordance with its occupational health, safety, and environmental policy, Sarıtaş's approach to practice and service conforms to all rules and regulations in effect. In connection to this, Sarıtaş holds **ISO 9001** Quality Management Systems certification as well as **ISO 14001** Environmental Management and **OHSAS 18001** Occupational Health and Safety certification, showing the highest level of commitment to the coexistence of industry, nature, and humankind. Additionally, the recently obtained **ISO 27001** IT Information Security Management certification guarantees data communication security.



ISO 9001



ISO 14001



OHSAS 18001



ISO 27001





SARITAŞ ÇELİK SANAYİ ve TİCARET A.Ş.

Dudullu Headquarter

Yukarı Dudullu Org. San. Bölğ.
2. Cad. No: 31-33 34775
Ümraniye - İstanbul /Türkiye
Tel: (+90 216) 466 49 00
Fax: (+90 216) 466 49 16

Gebze Factory

Gebze Organize Sanayi Bölgesi
1900. Sokak No: 1901 41480
Çayırova - Kocaeli /Türkiye

www.saritas.com.tr