



**Stainless Steel**  
(Processing & Distribution)  
**Center**



**SARITAŞ**

“ STAINLESS STEEL CENTER ”



## Being the Best...

The idea of "Being The Best" has always shaped our lives. What we have accomplished until today and what we will conquer tomorrow all originates in the perfectionism inherited from our founder/father Hüseyin Sarıtaş.

The adventure had started with metal trade and continued with the philosophy of "giving best service". The more we get into the Steel business, the more we learned the best kind. We have discovered stainless steel which will shape the future, adapting to the changing technology and being used safely in all areas of life... Afterwards it was stainless steel all in our minds and business.

Our transition from "Perşembe Pazarı" to "Dudullu" was ushering the transformation. Sarıtaş was now the leader of Stainless Steel Sector in Turkey and the leader was targeting the international arena.



Taking part in the international arena was never enough; Maturing the knowledge and experience, the vision of Sarıtaş was deserving to be one of the pioneers of the World market, which required the combination of wide range of products and the machine park under the same roof. Thus we have established the Gebze Facility well suiting the position. Despite the common view of "It is not reasonable to make such an investment at this time", we have completed the facilities by adding the new machines and upgrading our capabilities with our all energy, enthusiams and passion.



Gebze Facility have now been equipped with the state of the art technology machinery park with international standards which can process, manufacture and stock all types of products as coil, plate and long products service centers.

Gebze Facility has become one of the largest stainless steel processing and distribuiton centers in the world under one roof in terms of both investment and processing capacity.

With our experienced staff walking on the same path with us, we are working for our country and running undauntedly for leaving sound grounds for the next generations.

### Ercüment Sarıtaş

Chairman of the Executive Board





## All About Stainless is now under one roof...

The growing importance of Stainless Steel, the material of all times, has increased the demand, broadening manufacturing range. The idea of combining the rich product range and the wide distribution network has shaped grounds of Gebze Facility.

Gebze Facility is established on an ground area of 113.000 sq metre and with a covered area of 60.000 sq metre. Providing the most developed technology to its experienced and specialized staff, Sarıtaş is processing with utmost care. The new structure contains, a coil service centre with upgraded capability of cutting and slitting up to 16 mm thickness, a plate service centre and long products service centre, has been established to ensure that the company is in a position to fully meet the demanding requirements of the market with just-in-time delivery and to be performed with reliable and professional services.

Being one of the largest independent processing and distribution centres in the world, Sarıtaş is offering the widest range of processing capabilities, and the widest stock, acquiring a reasonable sound market share in Turkey but also to keeping its leading exporter position to surrounding regions.



The leader organization of the Stainless Steel Sector Sarıtaş has raised the harmony of industry, environment and human to the highest point with its certificates of "Quality Management System" "Environmental Management System" "Work Health and Safety Management System"





# Coil Service Center



## 6 Cut-to-Length Lines

Maximum Width	Thickness Range (min.- max.)	Length Range (min.- max.)
1250 mm	0.40 - 0.60 mm	200 - 6.000 mm
1500 mm	0.60 - 1.50 mm	300 - 6.000 mm
2000 mm	1.50 - 15.0 mm	500 - 15.000 mm

## Cut-to-length

Sarıtaş, is giving first class service to its customers with the latest technology cut-to-length lines. The stainless steel coils can be cut in thicknesses from 0,30 mm to 16 mm and to a length up to 15 meters with the current 6 cut-to-length lines.



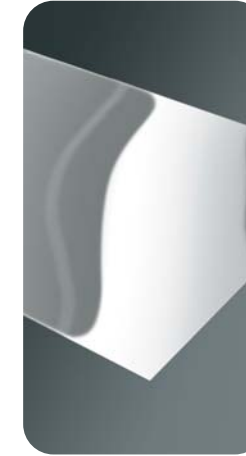


**Slitting**  
With the current 5 slitting lines the stainless steel coils in thicknesses ranging from 0.40 mm to 15 mm can be slitted to strips of minimum 9 mm width with very low tolerances.



#### 5 Slitting Lines

Thickness Range	Min. Sript Width	Max. Coil Width
0.30 - 1.00 mm	10 mm	750 mm
1.00 - 2.00 mm	17 mm	750 mm
2.00 - 5.00 mm	15 mm	2100 mm
6.00 - 8.00 mm	20 mm	2100 mm
10.00 - 12.00 mm	30 mm	2100 mm
12.00 - 15.00 mm	40 mm	2100 mm



#### 3 Coil to Coil Grinding / Brushing Lines

Thickness Range (min.- max.)	Min. Coil Width	Max Coil Width
0.40 - 3.20 mm	400 mm	1.600 mm

#### Sheet to Sheet Grinding / Brushing Line

Thickness Range (min.- max.)	Min. Sheet Width	Max. Sheet Width	Min. Sheet Length	Max. Sheet Length
0.40 - 3.20 mm	150 mm	1.550 mm	800 mm	6.000 mm

#### Marble / Circle Finishing Line

Thickness Range (min.- max.)	Min. Sheet Width	Max. Sheet Width	Min. Sheet Length	Max. Sheet Length
0.60 - 10.0 mm	500 mm	2.000 mm	850 mm	6.000 mm

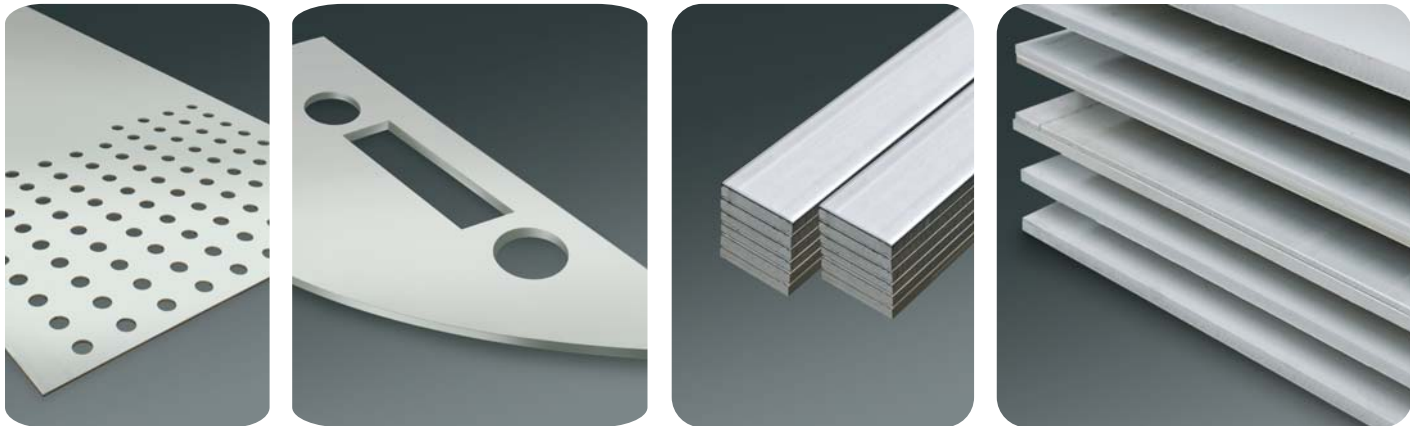
#### No.8 Super Mirror / Finishing Line

Thickness Range (min.- max.)	Min. Sheet Width	Min. Sheet Length	Max. Sheet Length
0.50 - 10.0 mm	1.600 mm	1.000 mm	6.000 mm

**Grinding/Brushing**  
The grinded and brushed surfaces at international standards are obtained with the lines. Based on the demand coming from the customer, protective films can be applied on the surface to protect these surfaces.



# Plate Service Center



**Plasma Cutting**  
With our plasma cutting machine, your general purpose cutting demands are satisfied with the most quick and convenient manner.  
The underwater cutting feature, eliminates risk of damage during the process.

**Laser Cutting**  
The laser cutting line is giving the best result in precise cutting demands without any defects and also provides the protection of the original form of materials during its contact with excessive heat.

**Guillotine Shearing**  
With our giant hydraulic guillotine shears, we have the capability to cut the stainless steel sheets up to 34 mm.

### Laser Cutting

Thickness Range (min.- max.)	Maximum Width	Maximum Length
0.40 - 25.0 mm	2.000 mm	4.000 mm

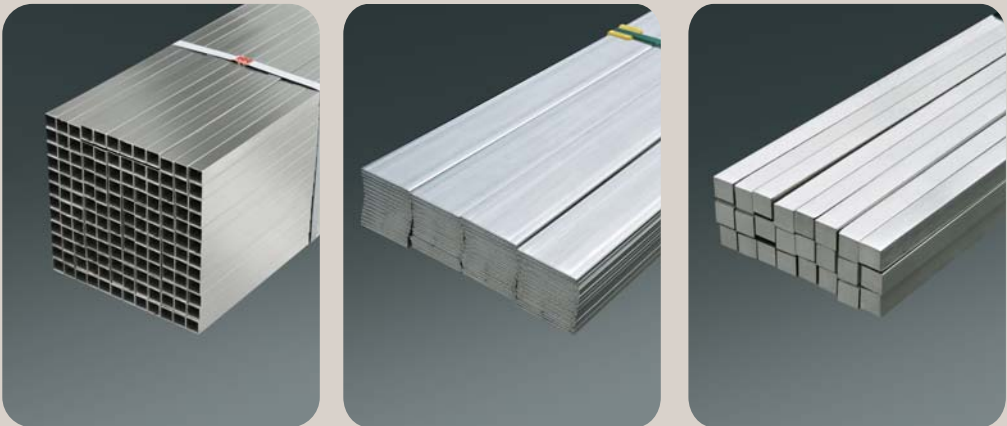
### Plasma Cutting

Thickness Range (min.- max.)	Maximum Width	Maximum Length
10.0 - 100.0 mm	4.000 mm	12.000 mm

### Guillotine Shearing

Thickness Range (min.- max.)	Maximum Width	Maksimum Length
3.0 - 34.0 mm	6.000 mm	6.400 mm

# Long Products Service Center



**Flat Bar production**  
Saritas is the first one to start flat bars production in our country, equipped with grinding- brushing, PVC coating and automatic packaging system flat bar production lines are giving service for both standard and special size inquiries.

### Flat Bars Production

Thickness Range (min.- max.)	Minimum Width	Maximum Width	Maximum Length
0.70 - 250 mm	15 mm	250 mm	8.000 mm

### Square Bar Production

Thickness Range (min.- max.)	Minimum Width	Maximum Width	Maximum Length
0.70 - 250 mm	10 mm	250 mm	6.000 mm





### Vertical Saw Cutting

Thickness Range (min.- max.)	Minimum Width	Maximum Width	Maximum Length
10.0 - 250 mm	10 mm	2500 mm	6.000 mm

### Horizontal Saw Cutting

Thickness Range (min.- max.)	Minimum Length	Maximum Length
Ø 10.0 - 400 mm	950 mm	8.550 mm
10x8 mm - 500x400 mm		

### Vertical Saw

The square and rectangular metal sheets up to a length of 6000 mm can be manufactured in our service centre. With this manufacturing process, 90 degree precise sides can be obtained.

### Horizontal Saw

Horizontal saw is used for the cutting of the pipes, profiles, bars at non-standard sizes.



### Tube Polishing / Grinding and Packaging

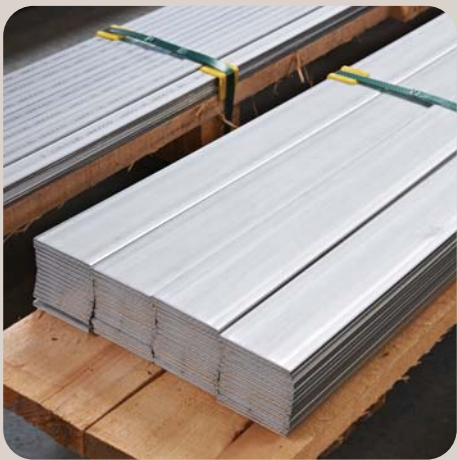
Thickness Range (min.- max.)	Minimum Length	Maximum Length
Ø 12.0 - 120 mm	200 mm	8.000 mm

### Flat Bars, Square Rectangular Tubes Grinding / Brushing

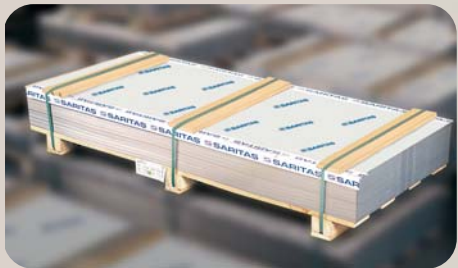
Thickness Range (min.- max.)	Minimum Length	Maximum Length
10x10 mm - 150x150 mm	200 mm	8.000 mm



# Distribution



The coils and packages prepared for delivery in accordance with the demands and needs of customers the safest and quickest techniques.







**SARITAŞ**

“ STAINLESS STEEL CENTER ”

[www.saritas.com.tr](http://www.saritas.com.tr)

**SARITAŞ ÇELİK SANAYİ VE TİCARET A.Ş.**

**Dudullu/Headquarters**

Yukarı Dudullu Org. San. Bölğ.  
2. Cad. No:31-33 34775  
Umraniye - İstanbul / Turkey  
Tel: (+90 216) 466 49 00  
Fax: (+90 216) 466 49 16

**Gebze**

Gebze Organize Sanayi Bölğ.  
1900. Sokak No.1901 41480  
Çayırova - Kocaeli / Turkey